



LEGACY

Planned Community

DEVELOPED AND PRESENTED BY:

WHITE STURGEON, LLC
NORTH CORRIDOR, LLC

6401 W Floating Feather Rd. | Eagle, ID 83616
208.286.9344 & 208.850.9654

Colliers
INTERNATIONAL

755 W Front St. #300 | Boise, ID 83702
208.908.8998

LEGACYEAGLE.COM



Table of Contents

Overview.....	3
Legacy Master Plan.....	4
Legacy Street Map.....	6
Snoqualmie Falls No. 11.....	8
Snoqualmie Falls No. 12.....	9
Snoqualmie Falls No. 13.....	10
Snoqualmie Falls No. 14.....	11
Snoqualmie River No. 3.....	12
Snoqualmie River No. 4.....	13
Snoqualmie Village No. 2.....	14
HOA Comparison.....	15
Gallery.....	16



This document has been prepared by Colliers International for advertising and general information only. Colliers International makes no guarantees, representations or warranties of any kind, expressed or implied, regarding the information including, but not limited to, warranties of content, accuracy and reliability. Any interested party should undertake their own inquiries as to the accuracy of the information. Colliers International excludes unequivocally all inferred or implied terms, conditions and warranties arising out of this document and excludes all liability for loss and damages arising there from. This publication is the copyrighted property of Colliers International and/or its licensor(s). ©2020. All rights reserved



LEGACY

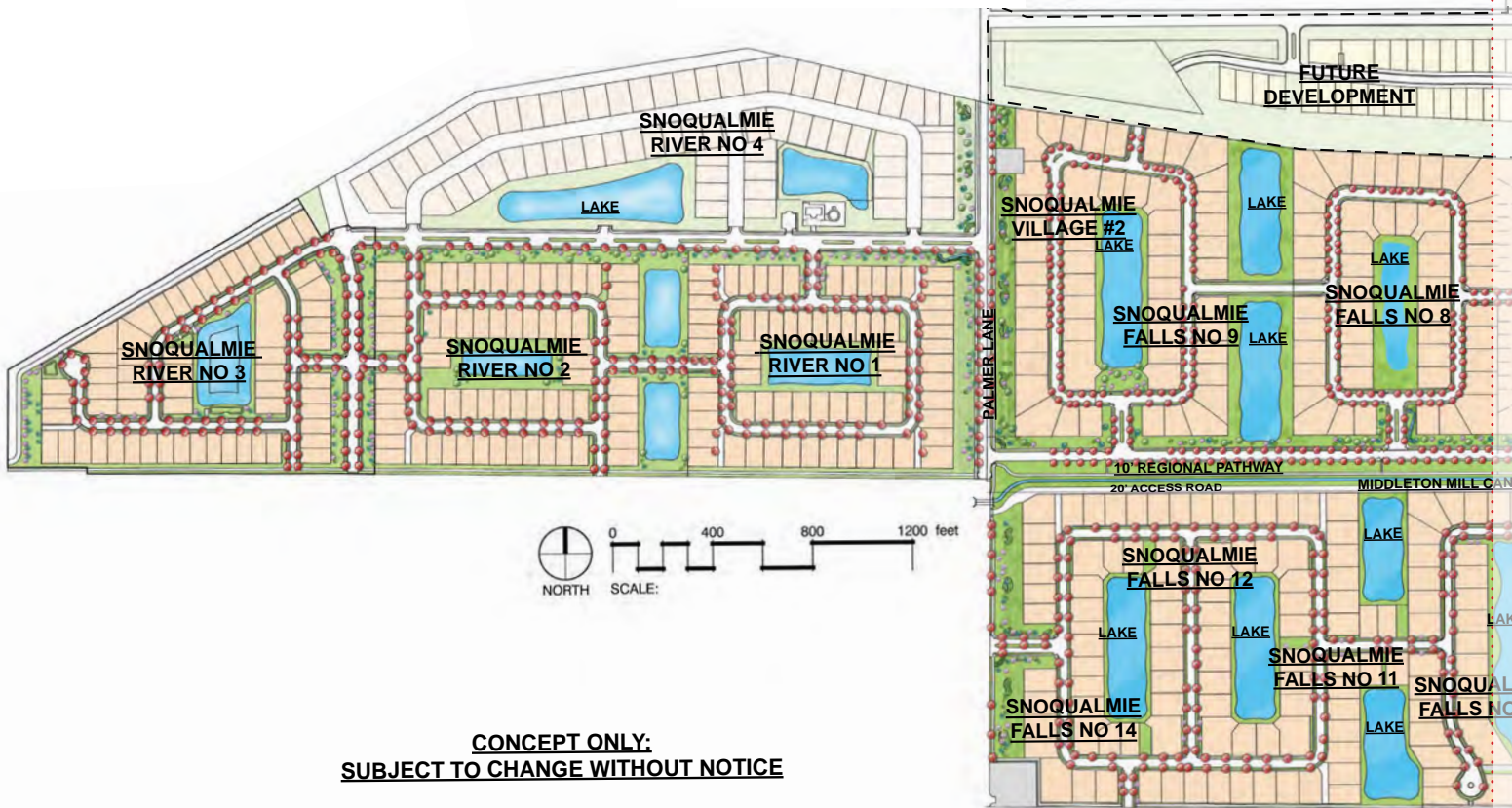
The Legacy Development in Eagle, Idaho supports the good life, nestled perfectly between the Boise metro area and world-class backcountry recreation.

The development itself creates a haven with 34% open space far exceeding Eagle's above average requirements of 20%. This open space is filled with magnificent water features, beautiful flora and abundant community facilities.

Recreational facilities include a 26-acre three hole executive practice golf course, three tennis courts, a swimming facility with pool house, and miles of picturesque walking paths.

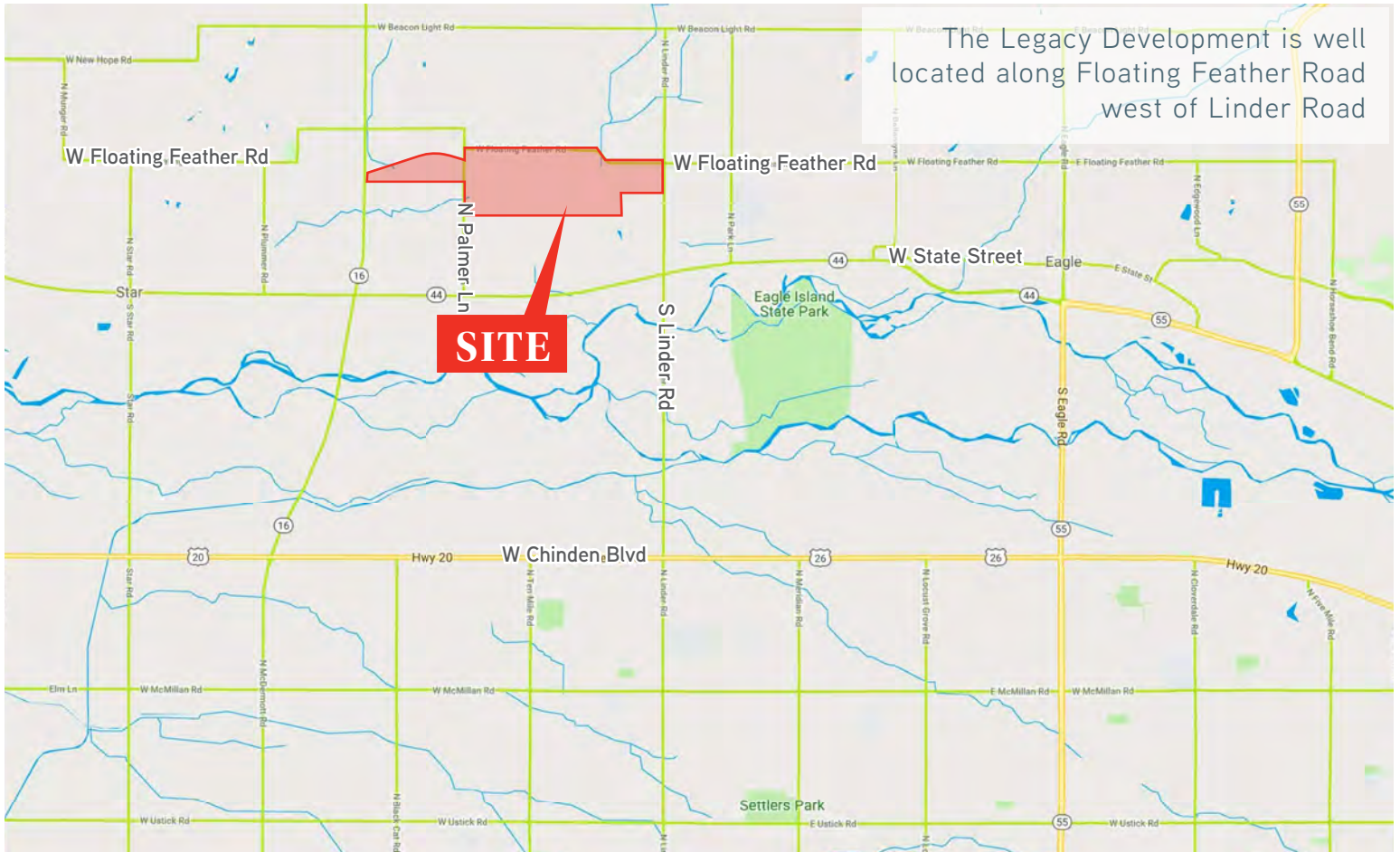


LEGACY Master Plan

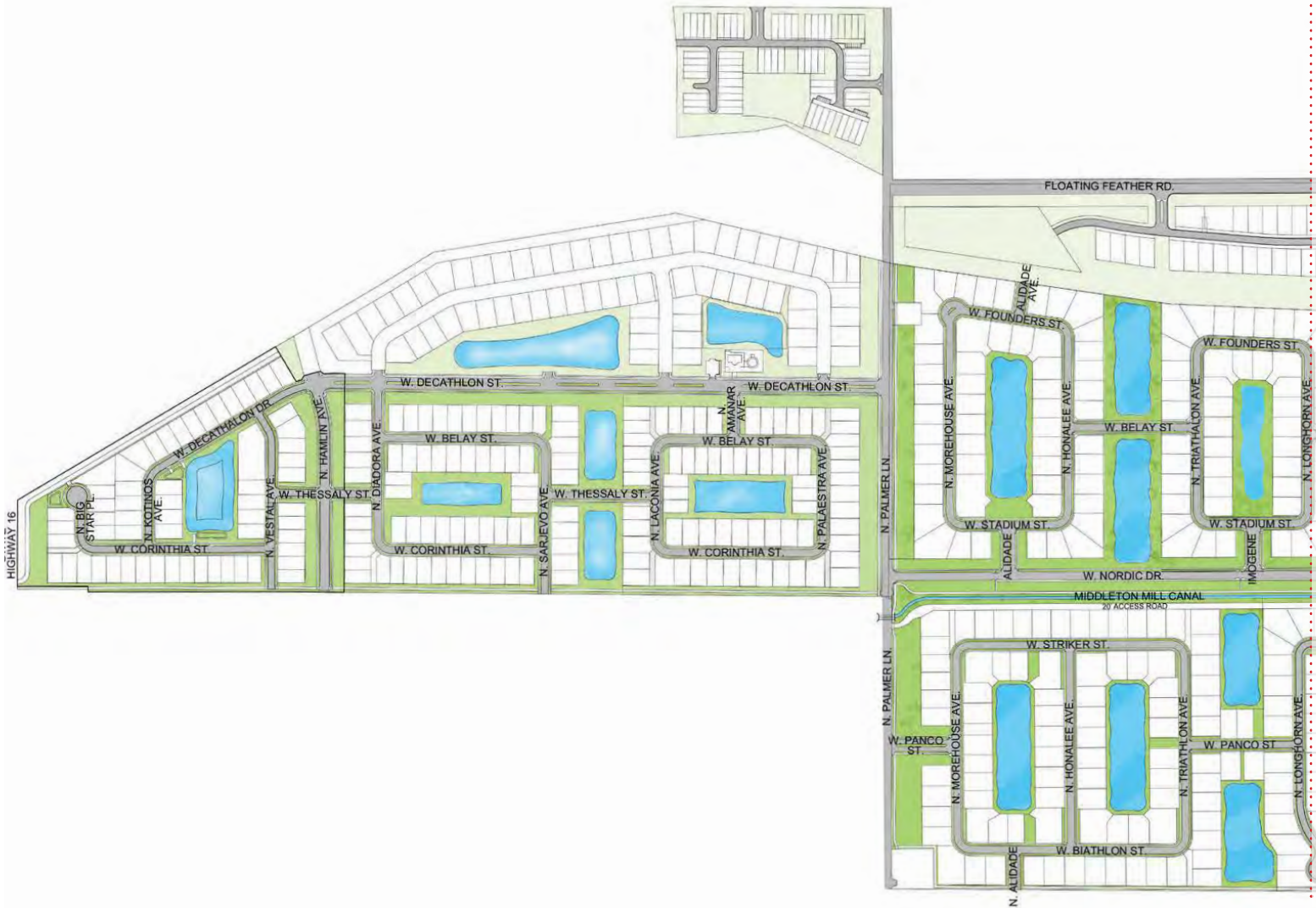


**CONCEPT ONLY:
SUBJECT TO CHANGE WITHOUT NOTICE**

The Legacy Development is well located along Floating Feather Road west of Linder Road

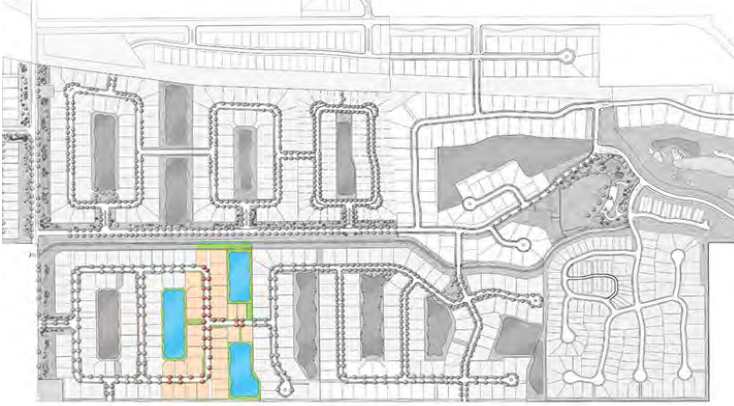


LEGACY Street Map





LEGACY Snoqualmie Falls No. 11



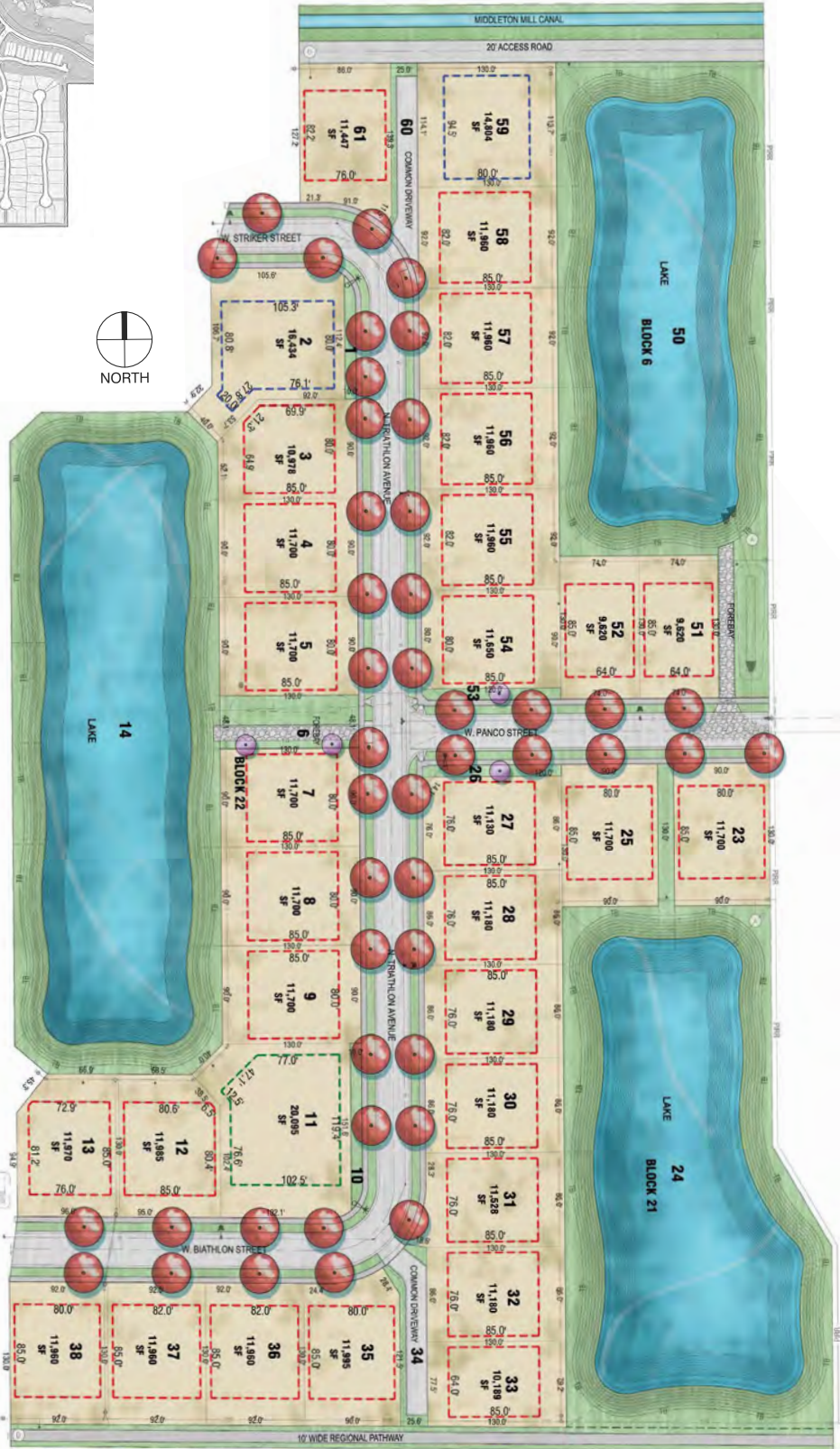
Phase 11



Back of lot extension to waters edge [option]



Tile pavers to waters edge

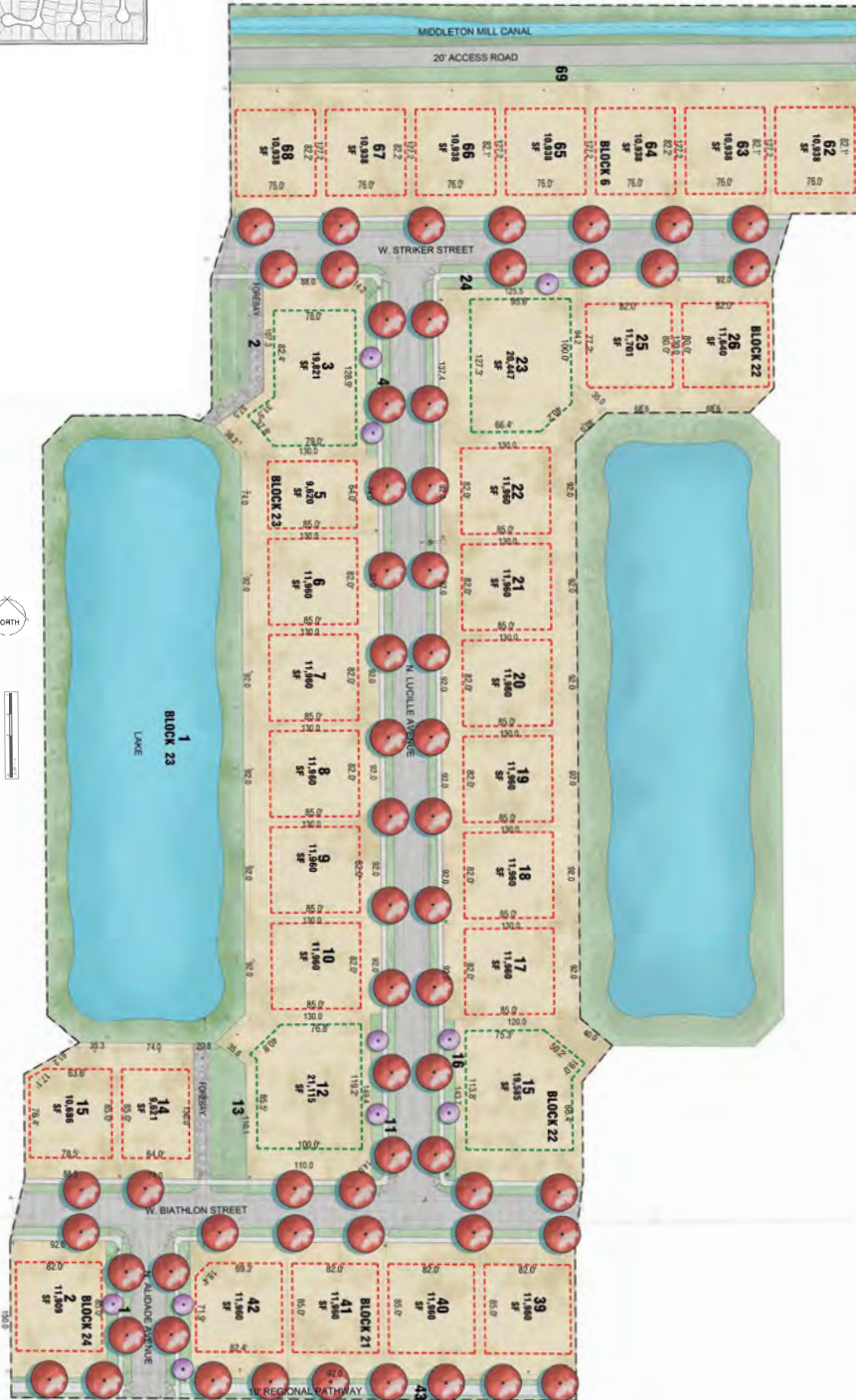




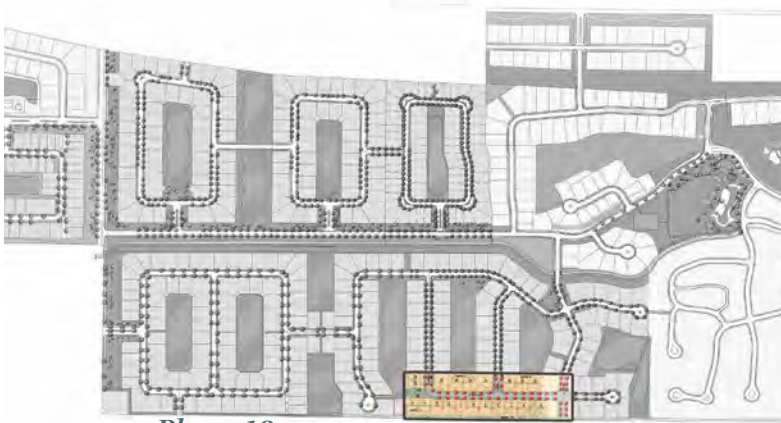
LEGACY *Snoqualmie Falls No. 12*



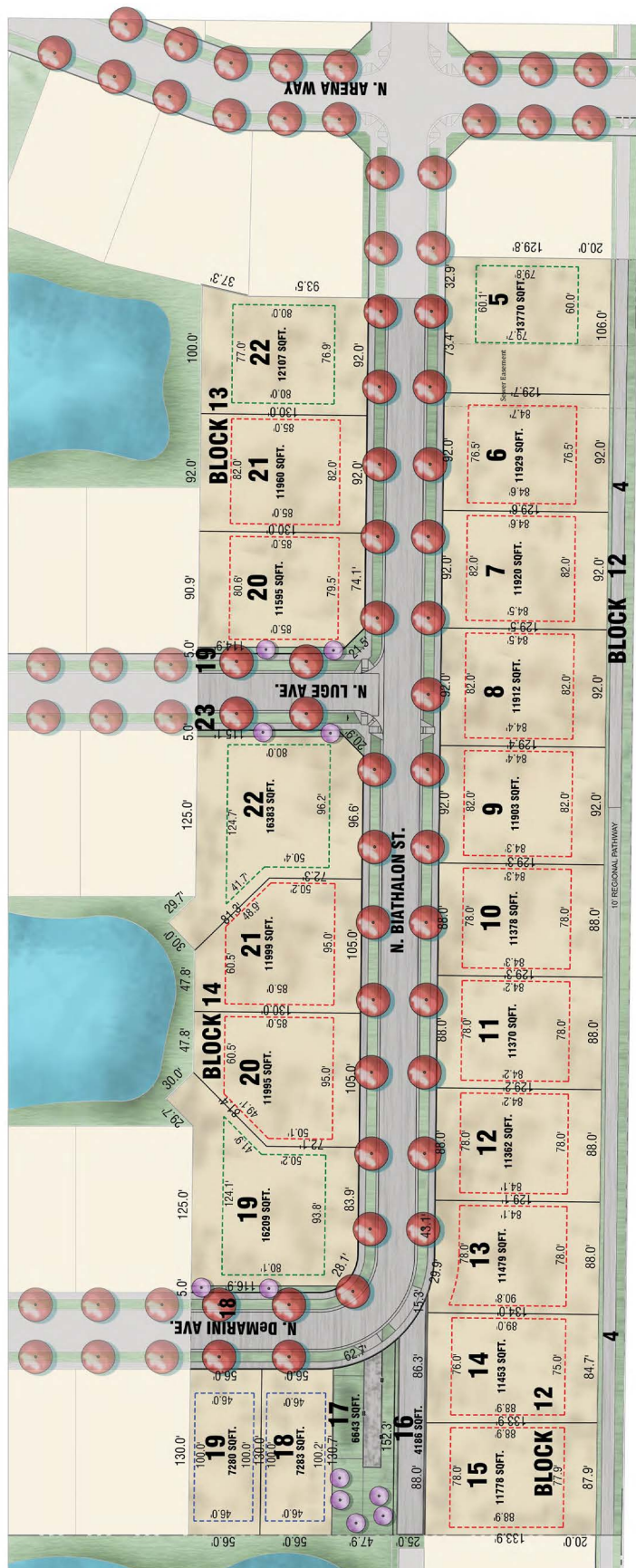
Phase 12



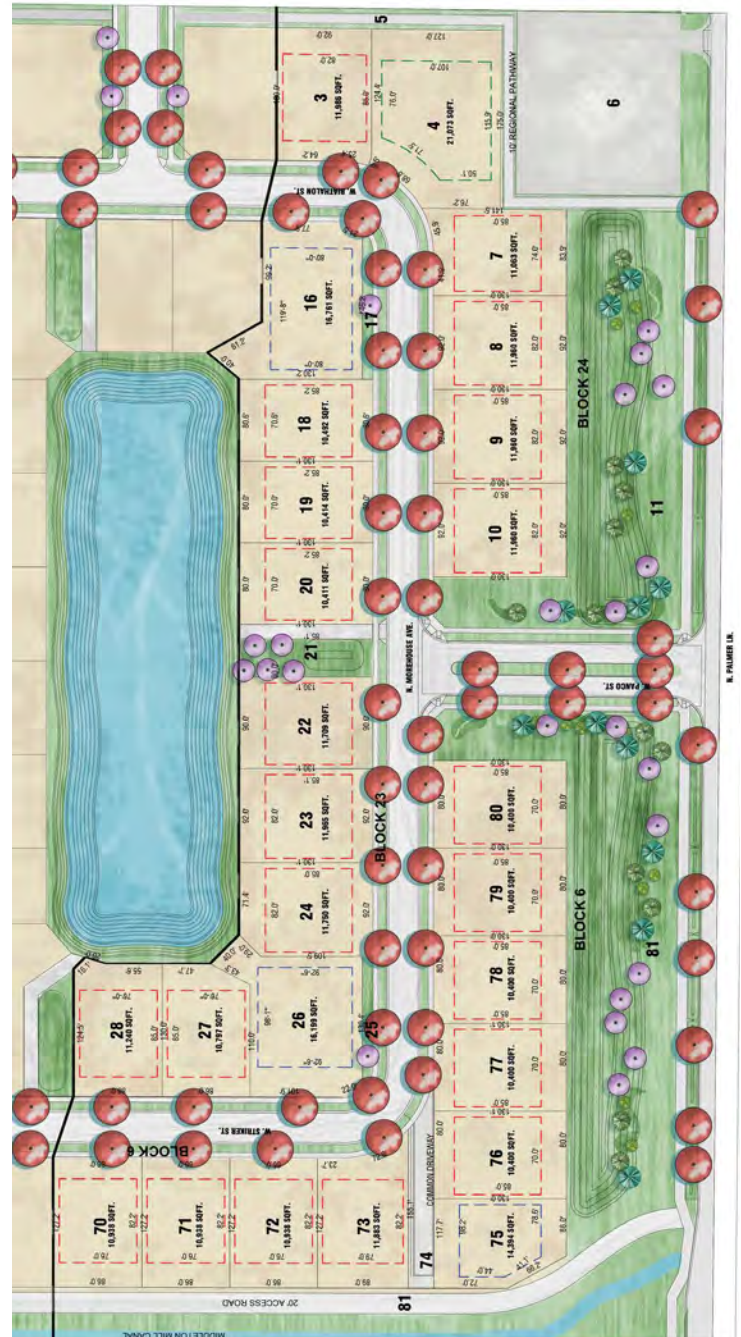
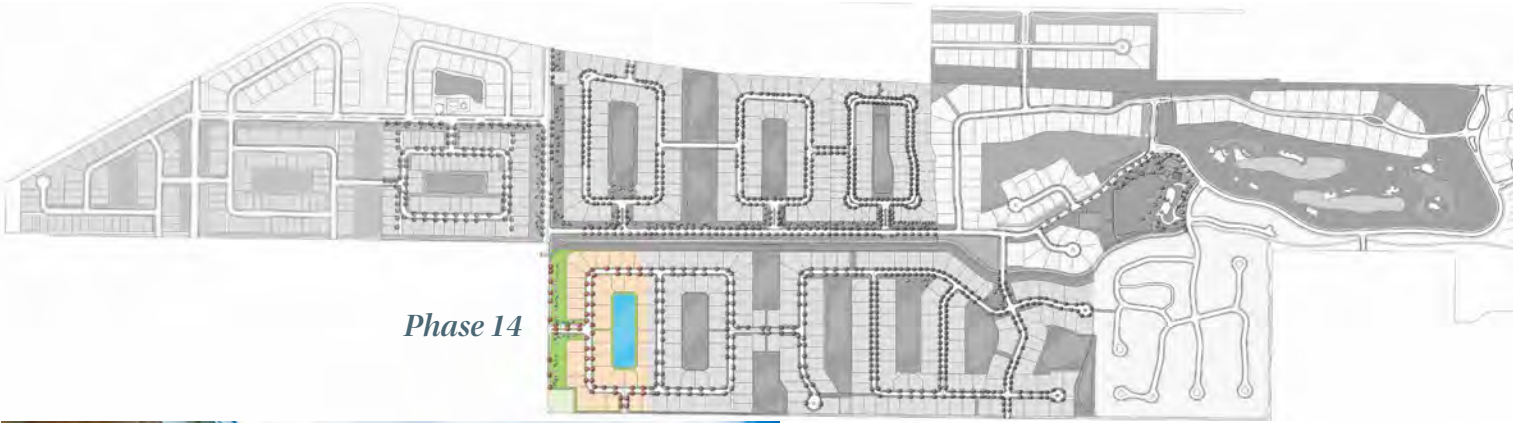
LEGACY Snoqualmie Falls No. 13



Phase 13



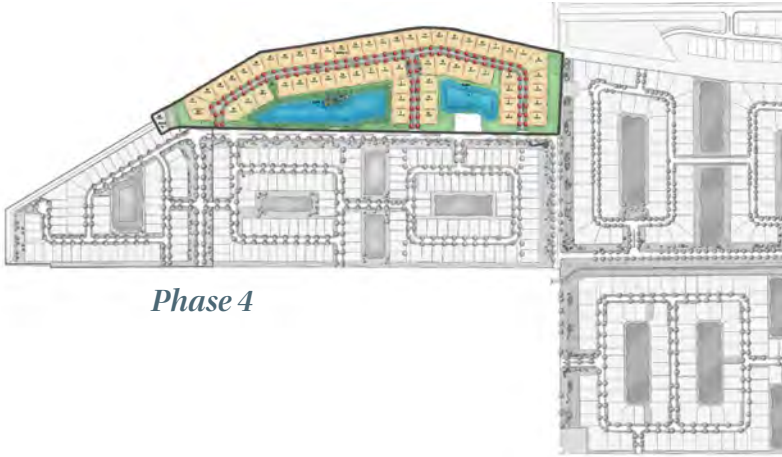
LEGACY Snoqualmie Falls No. 14



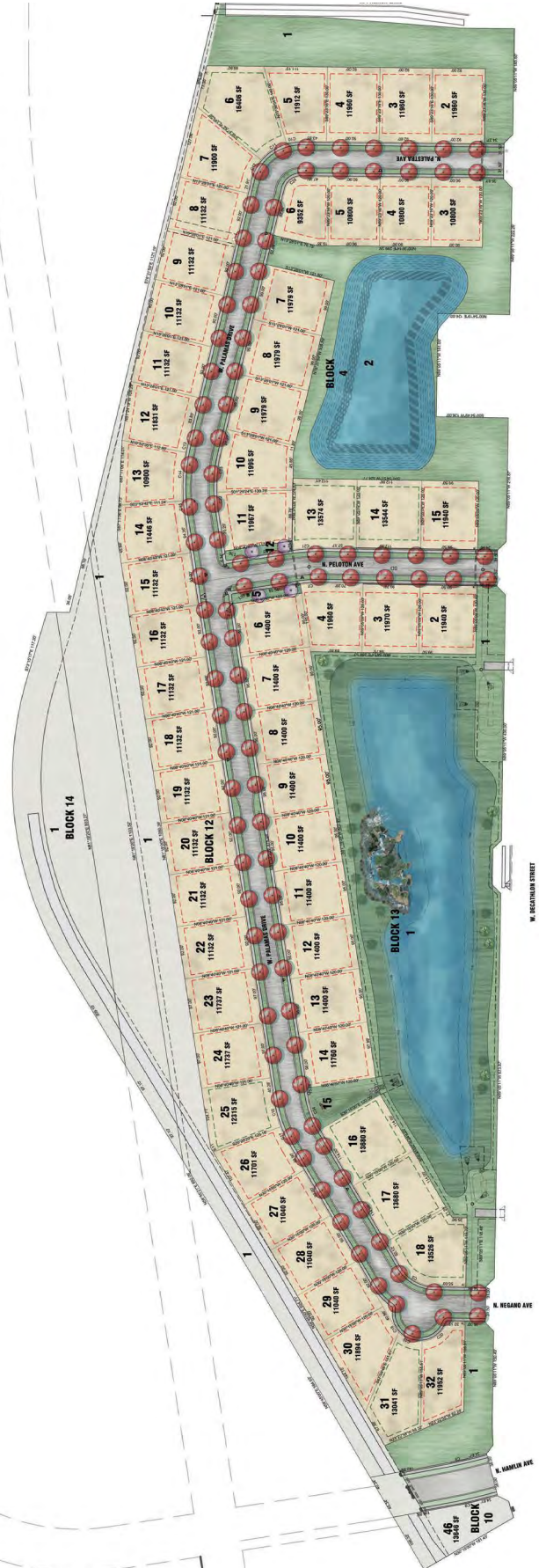
LEGACY *Snoqualmie River No. 3*



LEGACY *Snoqualmie River No.4*

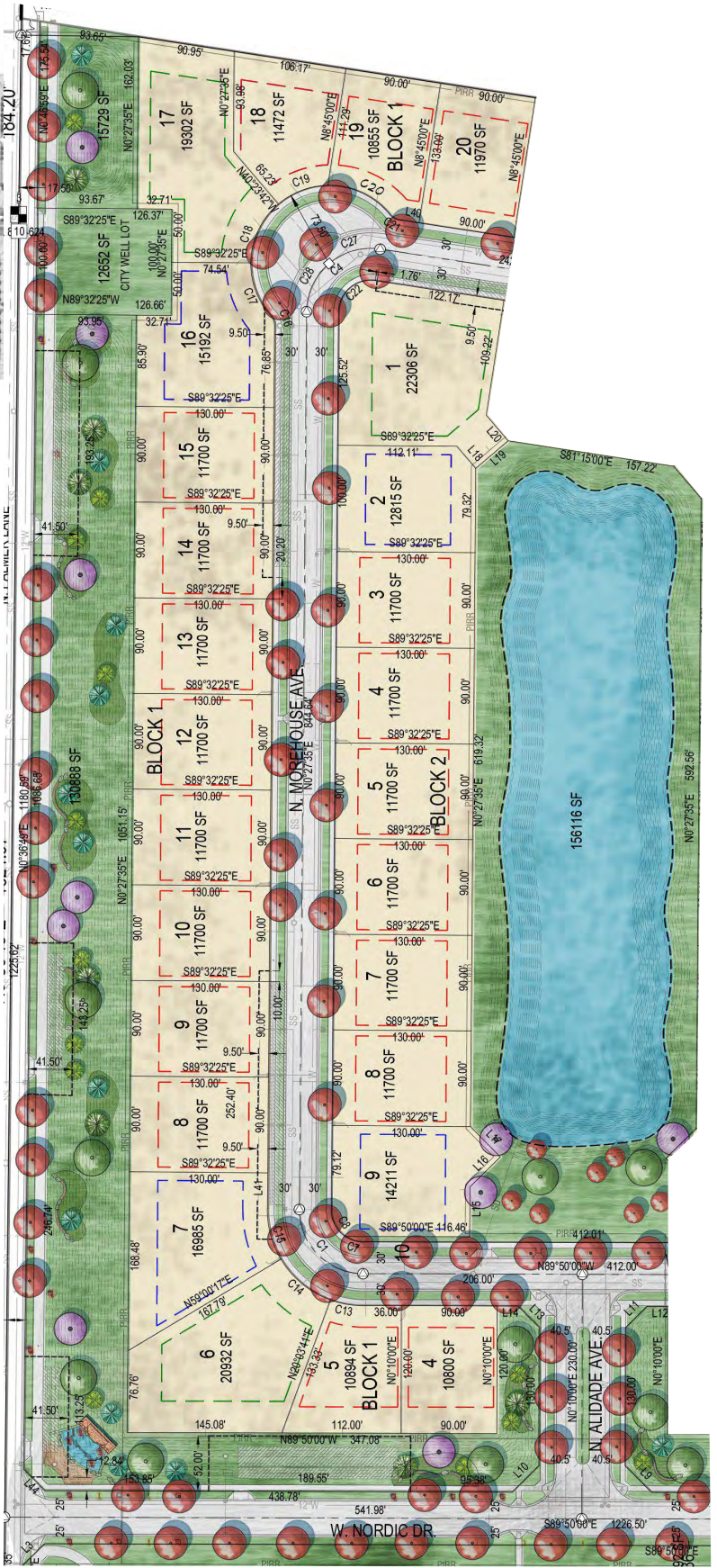
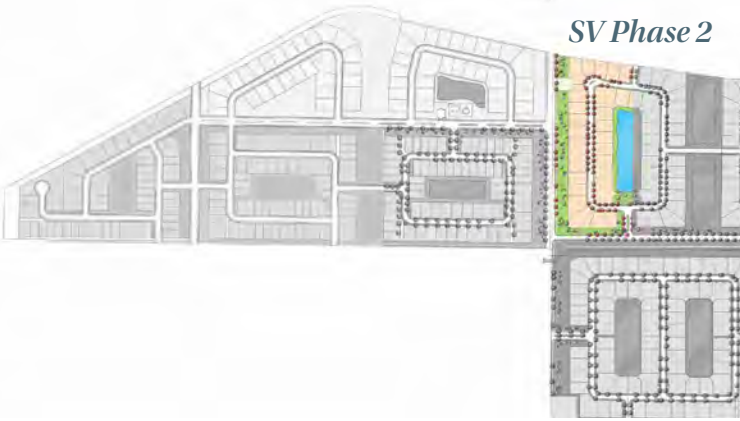


Phase 4



LEGACY Snoqualmie Village No. 2

SV Phase 2



LEGACY HOA Comparison

Mace River Ranch		Yearly
A Lots	Gated	\$1,900.00
B Lots	Non-gated	\$1,400.00

Legacy Lots		Yearly
A Lots	≤ 12,000 SF Lots	\$1,614.29
B Lots	5,000-12,000 SF Lots	\$1,664.05
C Lots	≥12,000 SF Lots	\$1,797.17

The Shores		Yearly
A Lots	All Lots	\$2,400.00

Lakemoor		Yearly
A Lots	Main Association Dues	\$1,400.00
Add. Srvc	Irrigation Fees (lot/year)	\$274.00
		\$1,674.00

Two Rivers		Yearly
A Lots	Non-gated Community	\$1,918.00

Two Rivers, <i>The Pointe Gated Community</i>		Yearly
A Lots	Main Association Dues	\$2,250.32
Add. Srvc	Sub Association Dues	\$2,400.00
		\$4,650.32

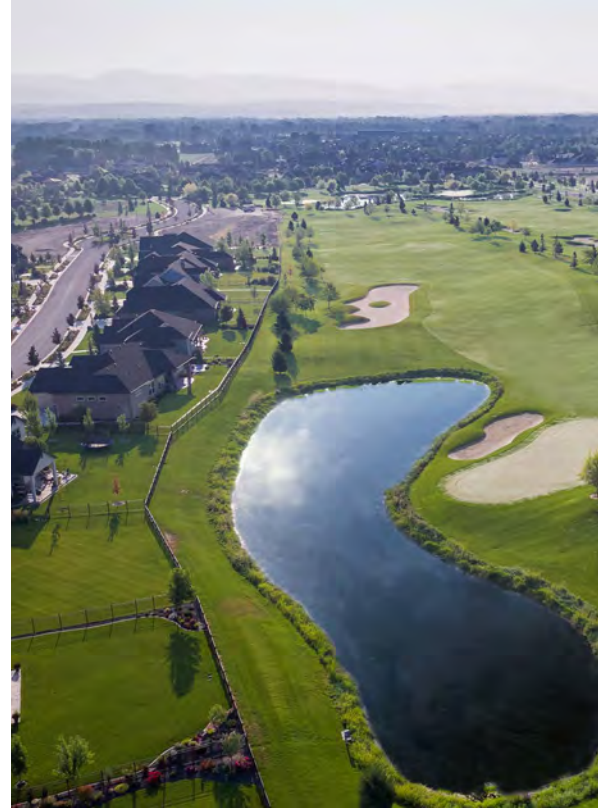
Two Rivers, <i>The Streams Gated Community</i>		Yearly
A Lots	Main Association Dues	\$1,708.36
Add. Srvc	Sub Association Dues	\$1,480.00
		\$3,183.36

Two Rivers, <i>The Island Gated Community</i>		Yearly
A Lots	Main Association Dues	\$2,302.28
Add. Srvc	Sub Association Dues	\$1,200.00
		\$3,502.28

*Note: Yearly Association Dues may not be most recent & are subject to change.



LEGACY *Gallery*



LEGACY Gallery



LEGACY *Gallery*

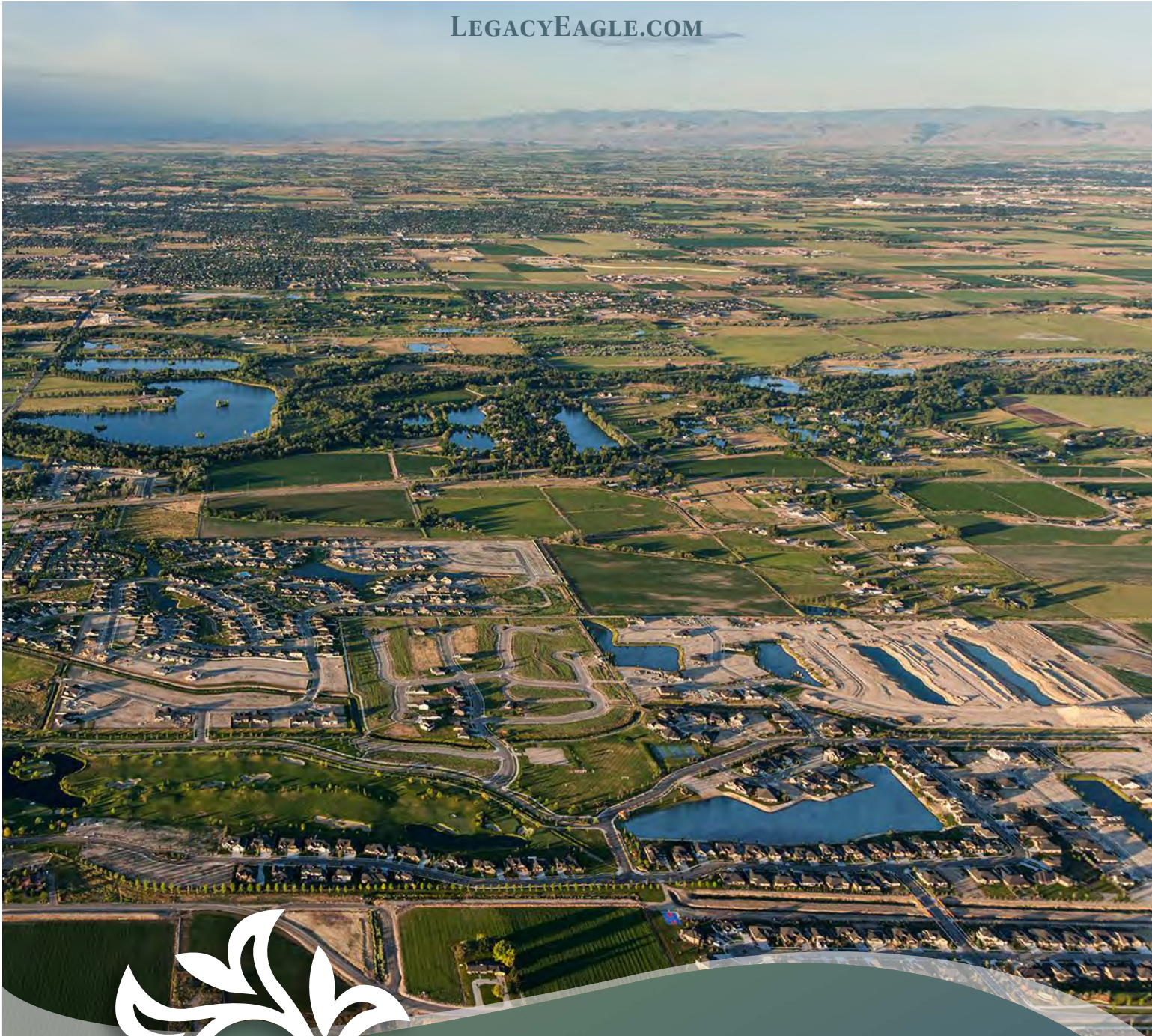


LEGACY *Gallery*



LEGACY Gallery





LEGACY

Planned Community

DEVELOPED AND PRESENTED BY:

WHITE STURGEON, LLC
NORTH CORRIDOR, LLC

6401 W Floating Feather Rd. | Eagle, ID 83616
208.286.9344 & 208.850.9654

Colliers
INTERNATIONAL

755 W Front St. #300 | Boise, ID 83702
208.908.8998